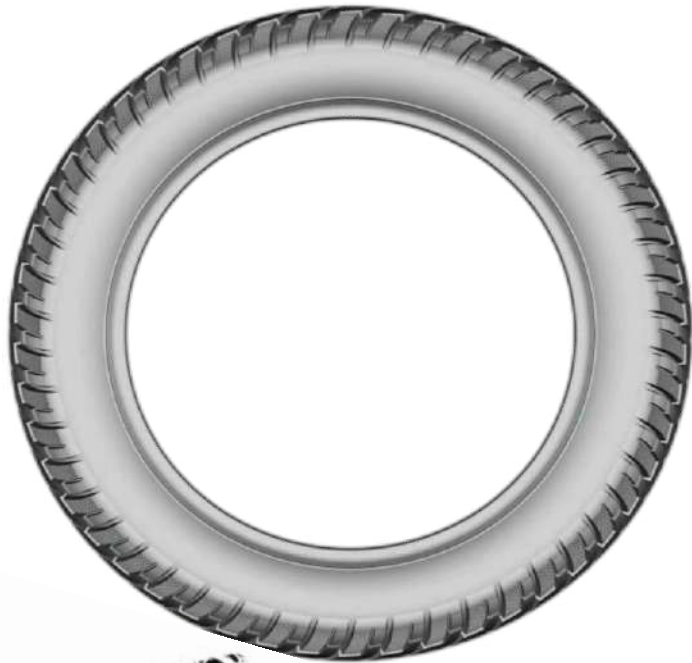


# MAXWIND TYRES.



### Long Haul Series

- The widened tread and high saturation pattern designed for increasing the effective grounding area of the pattern and excellent wear resistance.



**WM818**

#### MAIN SIZES AND PARAMETERS

Sizes	Ply	Load Index	Speed level	Standard rim	Section width (mm)	Outer diameter (mm)	Design of tread depth (mm)
11R22.5	18	149/146	L	8.25	279	1054	15.0
295/80R22.5	18	152/149	M	9.00	298	1044	16.0

### Long Haul Series

- Classic zigzag type patterns and more scientific pattern angle is suitable for steering positions;
- Transversal and open pattern on tires shoulder provides better gripping capability.



**WM808**

#### MAIN SIZES AND PARAMETERS

Sizes	Ply	Load Index	Speed level	Standard rim	Section width (mm)	Outer diameter (mm)	Design of tread depth (mm)
11R22.5	18	149/146	L	8.25	279	1054	16
315/80R22.5	20	156/153	K	9	312	1076	16

### Long Haul Series

- Design of oblique pattern block and zigzag grooves provide better outstanding steering performance and stability as well as safe and good handling performance on dry and wet road;
- Small steel disc provide better heat dissipation and the applicability of different wheel location.



**WM898**

#### MAIN SIZES AND PARAMETERS

Sizes	Ply	Load Index	Speed level	Standard rim	Section width (mm)	Outer diameter (mm)	Design of tread depth (mm)
11R22.5	18	149/146	L	8.25	279	1054	15.0

### N.America Series

- Better traction and grip performance, Design of special pattern improves traction and grip performance; extra tread formula. with design of deeper pattern enhances wear-resisting performance, extends service life;
- Optimized design of shoulder offers better heat dispersion;



**WM858**

#### MAIN SIZES AND PARAMETERS

Sizes	Ply	Load Index	Speed level	Standard rim	Section width (mm)	Outer diameter (mm)	Design of tread depth (mm)
11R22.5	18	149/146	L	8.25	279	1054	20.5
11R24.5	18	152/149	L	8.25	279	1104	21.0

### Reasonable Short Haul

- Special block type pattern groove provides better driving performance;
- Special groove provides pattern self-clean performance and protect the bottom of groove.



**WM887**

#### MAIN SIZES AND PARAMETERS

Sizes	Ply	Load Index	Speed level	Standard rim	Section width (mm)	Outer diameter (mm)	Design of tread depth (mm)
295/80R22.5	18	152/149	M	9.00	298	1044	20.5
315/80R22.5	20	156/153	M	9.00	312	1082	20.5

### Reasonable Short Haul

- Deeper pattern with formulation of abrasion resistance and low heating performance for longer miles;
- Open shoulder and block type pattern provides strong traction and gripping stress.



**WM888**

#### MAIN SIZES AND PARAMETERS

Sizes	Ply	Load Index	Speed level	Standard rim	Section width (mm)	Outer diameter (mm)	Design of tread depth (mm)
295/80R22.5	18	152/149	M	9.00	298	1044	20.5
315/80R22.5	20	156/153	M	9.00	312	1082	20.5

### Reasonable Long Haul

- Broad tread and deep groove pattern, transversal groove, and shoulder transversal pattern to provide good driving performance and abrasion resistance.



**WM838**

#### MAIN SIZES AND PARAMETERS

Sizes	Ply	Load Index	Speed level	Standard rim	Section width (mm)	Outer diameter (mm)	Design of tread depth (mm)
295/80R22.5	18	152/149	M	9.00	298	1044	17

### Long Haul Series

- Design of oblique pattern block and zigzag grooves provide better outstanding steering performance and stability as well as safe and good handing performance on dry and wet road.



**WM848**

#### MAIN SIZES AND PARAMETERS

Sizes	Ply	Load Index	Speed level	Standard rim	Section width (mm)	Outer diameter (mm)	Design of tread depth (mm)
11R24.5	18	152/149	L	8.25	279	1104	16
295/80R22.5	18	152/149	M	9.00	298	1044	16.5
315/80R22.5	20	156/153	L	9.00	312	1082	16.5

### Reasonable Short Haul

- Big block patterns provides better driving performance and gripping stress on bad road;
- Interlaced reinforcing rib design at the pattern block bottom provides better tear resistance and anti-puncturing performance.



**WM868**

#### MAIN SIZES AND PARAMETERS

Sizes	Ply	Load Index	Speed level	Standard rim	Section width (mm)	Outer diameter (mm)	Design of tread depth (mm)
11R22.5	18	149/146	L	8.25	279	1054	20.5

### Long Haul Series

- Design of oblique pattern block and zigzag grooves provide better outstanding steering performance and stability as well as safe and good handing performance on dry and wet road.



**WM897**

#### MAIN SIZES AND PARAMETERS

Sizes	Ply	Load Index	Speed level	Standard rim	Section width (mm)	Outer diameter (mm)	Design of tread depth (mm)
315/80R22.5	20	156/153	M	9.00	312	1076	15.5

### Mining & Building

- Big block patterns provides better driving performance and gripping stress on bad road;
- Interlaced reinforcing rib design at the pattern block bottom provides better tear resistance and anti-puncturing performance.



**WM899**

#### MAIN SIZES AND PARAMETERS

Sizes	Ply	Load Index	Speed level	Standard rim	Section width (mm)	Outer diameter (mm)	Design of tread depth (mm)
295/80R22.5	18	152/149	M	9.00	298	1044	20.5

### Mining & Building

- Big block patterns provides better driving performance and gripping stress on bad road;
- Interlaced reinforcing rib design at the pattern block bottom provides better tear resistance and anti-puncturing performance.



**516**

#### MAIN SIZES AND PARAMETERS

Sizes	Ply	Load Index	Speed level	Standard rim	Section width (mm)	Outer diameter (mm)	Design of tread depth (mm)
12.00R20	20	156/153	K	8.5	312	1125	17.00
13R22.5	18	154/151	L	9.75	320	1124	17.00



### Mining & Building

- Big block patterns provides better driving performance and gripping stress on bad road;
- Interlaced reinforcing rib design at the pattern block bottom provides better tear resistance and anti-puncturing performance.



578

#### MAIN SIZES AND PARAMETERS

Sizes	Ply	Load Index	Speed level	Standard rim	Section width (mm)	Outer diameter (mm)	Design of tread depth (mm)
12.00R20	20	156/153	F	8.50	315	1125	19.00
13R22.5	20	156/153	K	9.75	320	1124	19.50

### Reasonable Long Haul

- Classic zigzag type patterns and more scientific pattern angle is suitable for steering positions



869

#### MAIN SIZES AND PARAMETERS

Sizes	Ply	Load Index	Speed level	Standard rim	Section width (mm)	Outer diameter (mm)	Design of tread depth (mm)
12.00R20	20	156/153	K	8.50	315	1125	17.00
11.00R20	18	152/149	K	8.00	293	1085	16.50
12R22.5	18	152/149	M	9.00	300	1084	16.50



### Mining & Building

- Big block patterns provides better driving performance and gripping stress on bad road;
- Interlaced reinforcing rib design at the pattern block bottom provides better tear resistance and anti-puncturing performance.



579

#### MAIN SIZES AND PARAMETERS

Sizes	Ply	Load Index	Speed level	Standard rim	Section width (mm)	Outer diameter (mm)	Design of tread depth (mm)
12.00R20	20	156/153	B	8.50	315	1125	26.00
13R22.5	20	156/153	K	9.75	320	1124	19.50

### Long Haul Series

- Design of oblique pattern block and zigzag grooves provide better outstanding steering performance and stability as well as safe and good handing performance on dry and wet road.



866

#### MAIN SIZES AND PARAMETERS

Sizes	Ply	Load Index	Speed level	Standard rim	Section width (mm)	Outer diameter (mm)	Design of tread depth (mm)
11.00R20	18	152/149	K	8.00	293	1085	16.50
12R22.5	18	152/149	M	9.00	300	1084	16.50

### Long Haul Series

- Broad tread and deep groove pattern, transversal groove, and shoulder transversal pattern to provide good driving performance and abrasion resistance;



**819**

#### MAIN SIZES AND PARAMETERS

Sizes	Ply	Load Index	Speed level	Standard rim	Section width (mm)	Outer diameter (mm)	Design of tread depth (mm)
11.00R20	18	152/149	K	8.0	293	1085	17.0
12.00R20	20	156/153	K	8.5	315	1125	17.5
12R22.5	18	152/149	M	9.0	300	1085	17.5

### Mining & Building

- Big block patterns provides better driving performance and gripping stress on bad road;
- Interlaced reinforcing rib design at the pattern block bottom provides better tear resistance and anti-puncturing performance.



**828**

#### MAIN SIZES AND PARAMETERS

Sizes	Ply	Load Index	Speed level	Standard rim	Section width (mm)	Outer diameter (mm)	Design of tread depth (mm)
11.00R20	18	152/149	K	8.0	293	1096	21.5
12.00R20	20	156/153	K	8.5	315	1136	22

### Long Haul Series

- Design of oblique pattern block and zigzag grooves provide better outstanding steering performance and stability as well as safe and good handling performance on dry and wet road.



**889**

#### MAIN SIZES AND PARAMETERS

Sizes	Ply	Load Index	Speed level	Standard rim	Section width (mm)	Outer diameter (mm)	Design of tread depth (mm)
11R22.5	16	146/143	M	8.25	279	1054	17.0
12R22.5	18	152/149	M	9.00	312	1076	17.0

### Reasonable Short Haul

- Deeper pattern with formulation of abrasion resistance and low heating performance for longer miles;
- Open shoulder and block type pattern provides strong traction and gripping stress.



**556**

#### MAIN SIZES AND PARAMETERS

Sizes	Ply	Load Index	Speed level	Standard rim	Section width (mm)	Outer diameter (mm)	Design of tread depth (mm)
12.00R20	20	156/153	F	8.5	315	1125	18.0



### Mining & Building

- Big block patterns provides better driving performance and gripping stress on bad road;
- Interlaced reinforcing rib design at the pattern block bottom provides better tear resistance and anti-puncturing performance.



929



#### MAIN SIZES AND PARAMETERS

Sizes	Ply	Load Index	Speed level	Standard rim	Section width (mm)	Outer diameter (mm)	Design of tread depth (mm)
12.00R20	20	156/153	D	8.5	300	1085	23.0

### Mining & Building

- Big block patterns provides better driving performance and gripping stress on bad road;
- Interlaced reinforcing rib design at the pattern block bottom provides better tear resistance and anti-puncturing performance.



939



#### MAIN SIZES AND PARAMETERS

Sizes	Ply	Load Index	Speed level	Standard rim	Section width (mm)	Outer diameter (mm)	Design of tread depth (mm)
12.00R20	20	156/153	D	8.5	300	1085	19.5



### Mining & Building

- Big block patterns provides better driving performance and gripping stress on bad road;
- Interlaced reinforcing rib design at the pattern block bottom provides better tear resistance and anti-puncturing performance.



398



#### MAIN SIZES AND PARAMETERS

Sizes	Ply	Load Index	Speed level	Standard rim	Section width (mm)	Outer diameter (mm)	Design of tread depth (mm)
12.00R20	20	156/153	J	8.5	300	1085	23.5

### Mining & Building

- Big block patterns provides better driving performance and gripping stress on bad road;
- Interlaced reinforcing rib design at the pattern block bottom provides better tear resistance and anti-puncturing performance.



399



#### MAIN SIZES AND PARAMETERS

Sizes	Ply	Load Index	Speed level	Standard rim	Section width (mm)	Outer diameter (mm)	Design of tread depth (mm)
12.00R20	20	156/153	J	8.5	300	1085	23.5



### Mining & Building

- Big block patterns provides better driving performance and gripping stress on bad road.



818

#### MAIN SIZES AND PARAMETERS

Sizes	Ply	Load Index	Speed level	Standard rim	Section width (mm)	Outer diameter (mm)	Design of tread depth (mm)
11.00R20	18	152/149	K	8.00	293	1085	18.00

# HIGH QUALITY MAX SERIES





### Mining & Building

- Big block with deep patterns, provides strong gripping stress on bad road.



**WM783+**

#### MAIN SIZES AND PARAMETERS

Sizes	Ply	Load Index	Speed level	Standard rim	Section width (mm)	Outer diameter (mm)	Design of tread depth (mm)
215/75R17.5	16	127/124	K	6.00	211	767	15.0
235/75R17.5	16	132/129	M	6.75	233	797	15.5

### Mining & Building

- Optimized design of shoulder offers better heat dispersion;
- Optimized design of the grooves bottom prevents the bottom from damaging by stone.



**WM790+**

#### MAIN SIZES AND PARAMETERS

Sizes	Ply	Load Index	Speed level	Standard rim	Section width (mm)	Outer diameter (mm)	Design of tread depth (mm)
225/80R17.5	16	129/127	J	6.75	226	805	15.0

### Reasonable Short Haul

- Deeper pattern with formulation of abrasion resistance and low heating performance for longer miles.



**MAX78**

#### MAIN SIZES AND PARAMETERS

Sizes	Ply	Load Index	Speed level	Standard rim	Section width (mm)	Outer diameter (mm)	Design of tread depth (mm)
215/75R17.5	16	127/124	K	6.00	211	767	15.0
235/75R17.5	16	132/129	K	6.75	233	797	15.5

### Long Haul Series

- The widened tread and high saturation pattern designed for increasing the effective grounding area of the pattern and excellent wear resistance.



**MAX79**

#### MAIN SIZES AND PARAMETERS

Sizes	Ply	Load Index	Speed level	Standard rim	Section width (mm)	Outer diameter (mm)	Design of tread depth (mm)
215/75R17.5	16	127/124	M	6.00	211	767	13.0
235/75R17.5	16	132/129	M	6.75	233	797	13.0

### Reasonable Short Haul

- Deeper pattern with formulation of abrasion resistance and low heating performance for longer miles.



**MAX82**

#### MAIN SIZES AND PARAMETERS

Sizes	Ply	Load Index	Speed level	Standard rim	Section width (mm)	Outer diameter (mm)	Design of tread depth (mm)
11R22.5	18	149/146	L	8.25	279	1054	20.5
11R24.5	18	152/149	L	8.25	279	1104	20.5

### Reasonable Short Haul

- Square block pattern with transverse grooves between pattern blocks providing excellent driving performance.



**MAX83**

#### MAIN SIZES AND PARAMETERS

Sizes	Ply	Load Index	Speed level	Standard rim	Section width (mm)	Outer diameter (mm)	Design of tread depth (mm)
295/80R22.5	18	152/149	M	9.00	298	1044	20.5

### Long Haul Series

- Design of oblique pattern block and zigzag grooves provide better outstanding steering performance and stability as well as safe and good handling performance on dry and wet road.



**MAX85**

#### MAIN SIZES AND PARAMETERS

Sizes	Ply	Load Index	Speed level	Standard rim	Section width (mm)	Outer diameter (mm)	Design of tread depth (mm)
295/80R22.5	18	152/149	M	9.00	298	1044	17.0

### Mining & Building

- Interlaced reinforcing rib design at the pattern block bottom provides better tear resistance and anti-puncturing performance.



**MAX86**

#### MAIN SIZES AND PARAMETERS

Sizes	Ply	Load Index	Speed level	Standard rim	Section width (mm)	Outer diameter (mm)	Design of tread depth (mm)
295/80R22.5	18	152/149	F	9.00	298	1044	22.0

### Long Haul Series

- Small sipes help to heat dissipation and the applicability of different wheel location.



**MAX87**

#### MAIN SIZES AND PARAMETERS

Sizes	Ply	Load Index	Speed level	Standard rim	Section width (mm)	Outer diameter (mm)	Design of tread depth (mm)
11R22.5	18	149/146	M	8.25	279	1054	15.0

### Long Haul Series

- Design of proper proportion for block and groove to provide better wear resistance performance;
- Design of broader tires shoulder can prevent partial wear better.



**MAX88**

#### MAIN SIZES AND PARAMETERS

Sizes	Ply	Load Index	Speed level	Standard rim	Section width (mm)	Outer diameter (mm)	Design of tread depth (mm)
295/75R22.5	16	146/143	M	9.00	298	1014	11.5

### Long Haul Series

- Design of oblique pattern block and zigzag grooves provide better outstanding steering performance and stability as well as safe and good handling performance on dry and wet road.



**MAX89**

#### MAIN SIZES AND PARAMETERS

Sizes	Ply	Load Index	Speed level	Standard rim	Section width (mm)	Outer diameter (mm)	Design of tread depth (mm)
295/75R22.5	16	146/143	M	9.00	298	1014	15.0

### Reasonable Long Haul

- Optimized design of shoulder offers better heat dispersion;
- Optimized design of the grooves bottom prevents the bottom from damaging by stone.



**MAX90**

#### MAIN SIZES AND PARAMETERS

Sizes	Ply	Load Index	Speed level	Standard rim	Section width (mm)	Outer diameter (mm)	Design of tread depth (mm)
295/75R22.5	16	146/143	K	9.00	298	1014	20.5



### Reasonable Long Haul

- Classic zigzag type patterns and more scientific pattern angle is suitable for steering positions;
- Transversal and open pattern on tires shoulder provides better gripping capability.



MAX91

#### MAIN SIZES AND PARAMETERS

Sizes	Ply	Load Index	Speed level	Standard rim	Section width (mm)	Outer diameter (mm)	Design of tread depth (mm)
11R22.5	18	149/146	M	8.25	279	1054	16.5
11R24.5	18	152/149	L	8.25	279	1104	16.5

### Mining & Building

- Interlaced reinforcing rib design at the pattern block bottom, prevents groove bottom from being punctured, provides better tear resistance and anti-puncturing performance.



MAX92

#### MAIN SIZES AND PARAMETERS

Sizes	Ply	Load Index	Speed level	Standard rim	Section width (mm)	Outer diameter (mm)	Design of tread depth (mm)
295/80R22.5	18	152/149	F	9.00	298	1044	22.0
12R22.5	18	152/149	F	9.00	300	1085	25.0
315/80R22.5	22	164/160	F	9.00	312	1076	22.0
			D				



### Reasonable Long Haul

- Widened tread improves tire grounded pressure, one-way pattern groove provides better driving performance and wet and slip resistance.



MAX94

#### MAIN SIZES AND PARAMETERS

Sizes	Ply	Load Index	Speed level	Standard rim	Section width (mm)	Outer diameter (mm)	Design of tread depth (mm)
295/80R22.5	18	152/149	J	9.00	298	1044	19.5
315/80R22.5	22	164/160	G	9.00	312	1076	19.5
			D				

### Reasonable Short Haul

- Square block pattern with transverse grooves between pattern blocks providing excellent driving performance;



MAX96

#### MAIN SIZES AND PARAMETERS

Sizes	Ply	Load Index	Speed level	Standard rim	Section width (mm)	Outer diameter (mm)	Design of tread depth (mm)
295/80R22.5	18	152/149	M	9.00	298	1044	20.5
315/80R22.5	22	164/160	K	9.00	312	1076	20.5

### Long Haul Series

- Variable pitch design for low noise, fuel saving and excellent high speed performance;
- The special four-layer belt design for improving the steering stability of the tire.



**WM797+**

#### MAIN SIZES AND PARAMETERS

Sizes	Ply	Load Index	Speed level	Standard rim	Section width (mm)	Outer diameter (mm)	Design of tread depth (mm)
295/80R22.5	18	152/149	M	9.00	298	1044	17

### Reasonable Long Haul

- Optimized design of shoulder offers better heat dispersion;
- Optimized design of the grooves bottom prevents the bottom from damaging by stone.



**MAX98**

#### MAIN SIZES AND PARAMETERS

Sizes	Ply	Load Index	Speed level	Standard rim	Section width (mm)	Outer diameter (mm)	Design of tread depth (mm)
11R22.5	18	149/146	L	8.25	279	1054	22.5
11R24.5	18	152/149	L	8.25	279	1104	20.5

### Long Haul Series

- Variable pitch design for low noise, fuel saving and excellent high speed performance;
- The special four-layer belt design for improving the steering stability of the tire.



**MAX99**

#### MAIN SIZES AND PARAMETERS

Sizes	Ply	Load Index	Speed level	Standard rim	Section width (mm)	Outer diameter (mm)	Design of tread depth (mm)
11R22.5	18	149/146	M	8.25	279	1054	15
11R24.5	18	152/149	L	8.25	279	1104	15
295/80R22.5	18	152/149	M	9.00	298	1044	17
315/80R22.5	22	164/160	L	9.00	312	1076	15.5

### Long Haul Series

- The widened tread and high saturation pattern designed for increasing the effective grounding area of the pattern and excellent wear resistance.



**WM789+**

#### MAIN SIZES AND PARAMETERS

Sizes	Ply	Load Index	Speed level	Standard rim	Section width (mm)	Outer diameter (mm)	Design of tread depth (mm)
225/80R17.5	16	129/127	M	6.75	226	805	13.0

# PLUS SERIES



**MAXWIND**  
TYRES

## Long Haul Series

- The asymmetric and bold line type groove pattern in the middle area enhances the driving performance of tire and excellent self-cleaning performance of patterns.



**WM108PLUS**

### MAIN SIZES AND PARAMETERS

Sizes	Ply	Load Index	Speed level	Standard rim	Section width (mm)	Outer diameter (mm)	Design of tread depth (mm)
245/70R19.5	16	135/133	M	7.50	248	839	14.0

## Long Haul Series

- Design of oblique pattern block and zigzag grooves provide better outstanding steering performance and stability as well as safe and good handing performance on dry and wet road.



**WM112PLUS**

### MAIN SIZES AND PARAMETERS

Sizes	Ply	Load Index	Speed level	Standard rim	Section width (mm)	Outer diameter (mm)	Design of tread depth (mm)
7.00R16LT	14	118/114	M	5.50F	200	775	10.0
225/80R17.5	16	129/127	M	6.75	226	805	11.0
265/70R19.5	18	143/141	M	7.50	262	867	14.5

MAXWIND  
TYRES

CUSTOMIZED FOR HIGH QUALITY

MAXWIND  
TYRES

### Long Haul Series

- Design of four consistent grooves and slant-edge pattern provide outstanding drainage and grip performance.



**WM115PLUS**

#### MAIN SIZES AND PARAMETERS

Sizes	Ply	Load Index	Speed level	Standard rim	Section width (mm)	Outer diameter (mm)	Design of tread depth (mm)
7.50R16LT	16	125/121	L	6.00G	215	805	12.0

### Reasonable Short Haul

- Deeper pattern with formulation of abrasion resistance and low heating performance for longer miles.



**WM116PLUS**

#### MAIN SIZES AND PARAMETERS

Sizes	Ply	Load Index	Speed level	Standard rim	Section width (mm)	Outer diameter (mm)	Design of tread depth (mm)
295/80R22.5	20	154/151	K	9.00	298	1044	19.5
315/80R22.5	22	167/164	L	9.00	312	1076	19.5

### Mining & Building

- Big block with deep patterns, provides strong gripping stress on bad road.



**WM119PLUS**

#### MAIN SIZES AND PARAMETERS

Sizes	Ply	Load Index	Speed level	Standard rim	Section width (mm)	Outer diameter (mm)	Design of tread depth (mm)
11R22.5	18	149/146	J	9.00	279	1054	21.0
12R22.5	18	152/149	J	9.00	300	1085	22.5
315/80R22.5	22	167/164	J	9.00	312	1076	22.5
315/80R22.5	22	167/161	D	9.00	312	1076	22.5

### Reasonable Short Haul

- Specially designed tread pattern for stronger grip performance tire;
- Optimized design of widened side blocks to improve shoulder rigidity and improve tire wear resistance.



**WM183PLUS**

#### MAIN SIZES AND PARAMETERS

Sizes	Ply	Load Index	Speed level	Standard rim	Section width (mm)	Outer diameter (mm)	Design of tread depth (mm)
12.00R20(K)	22	158/155	K	8.5	315	1125	16.5

### Reasonable Short Haul

- Deeper pattern with formulation of abrasion resistance and low heating performance for longer miles.



**WM263PLUS**

#### MAIN SIZES AND PARAMETERS

Sizes	Ply	Load Index	Speed level	Standard rim	Section width (mm)	Outer diameter (mm)	Design of tread depth (mm)
12.00R20(K)	22	158/155	E	8.5	315	1125	20.0

### Mining & Building

- Big block patterns provides better driving performance and gripping stress on bad road.



**WM769PLUS**

#### MAIN SIZES AND PARAMETERS

Sizes	Ply	Load Index	Speed level	Standard rim	Section width (mm)	Outer diameter (mm)	Design of tread depth (mm)
12.00R20	22	158/155	E	8.5	315	1136	22.5

### Mining & Building

- Big block with deep patterns, provides strong gripping stress on bad road; Interlaced reinforcing rib design at the pattern
- block bottom, prevents groove bottom from being punctured, provides better tear resistance and anti-puncturing performance.



**WM126PLUS**

#### MAIN SIZES AND PARAMETERS

Sizes	Ply	Load Index	Speed level	Standard rim	Section width (mm)	Outer diameter (mm)	Design of tread depth (mm)
12.00R20	22	158/155	E	8.5	315	1136	24.5

### Winter Series

- Big block specially designed for now road provides good control performance and abrasion resistance;
- Proper steel disc design provides good gripping performance and wet slip resistance when dribing on snow road, improve tires ice-breaking performance and driving safety;
- Ultra-wide of tread provides better driving performance on the road. Big blokc specially designed for now road provides good control performance and abrasion resistance.



**WM111PLUS**

#### MAIN SIZES AND PARAMETERS

Sizes	Ply	Load Index	Speed level	Standard rim	Section width (mm)	Outer diameter (mm)	Design of tread depth (mm)
315/70R22.5	20	151/148	L	9.00	312	1020	24.0



# TBB SERIES



MAX89  
8.25-20 16PR  
9.00-20 18PR  
10.00-20 18PR  
11.00-20 20PR  
12.00-20 24PR



MAX87  
10.00-20 18PR  
11.00-20 18PR



WM878  
7.00-16 14PR



WM868  
7.50-16 16PR



M777  
5.00-12 10PR

M888  
6.40/6.50-13  
10PR  
6.50-14 10PR  
6.00-12 10PR  
5.00-12 10PR



M3  
8.25-20 16PR  
9.00-20 16PR  
10.00-20 18PR  
11.00-20 18PR

M2  
8.25-16 18PR  
7.50-16 16PR  
7.00-16 14PR  
7.00-15 14PR



WM323  
7.50-16 16PR  
7.00-16 14PR

EXTRA-LUG  
7.50-16 16PR



M11(333)  
8.25-16 18PR

M11(235)  
8.25-20 18PR  
7.00-15 14PR  
6.50-14 10PR





M11  
7.00-15 14RP  
6.50-14 10PR



M15  
9.00-20 18PR  
10.00-20 18PR  
11.00-20 18PR



M178  
7.50-16 16PR  
7.00-16 14PR



M666  
5.00-12 10PR

# OTR SERIES



# 657

4.00-8
5.00-8
15x4 1/2-8(125/75-8)
16x6-8(150/75-8)
18x7-8(180/70-8)
140/55-9
21x8-9(200/75-9)
6.50-10
23x9-10(225/75-10)
200/50-10
7.00-12
27x10-12(250/75-12)
6.00-15
7.00-15
8.25-15
28x9-15(8.15-15)
225/75-15



250-15(250/70-15)
300-15(315/70-15)
7.50-16
9.00-16
7.50-20
8.25-20
9.00-20

# E3/L3

29.5-25	28PR
	32PR
26.5-25	28PR
	32PR
23.5-25	20PR
	24PR
	28PR
20.5-25	20PR
	24PR
18.00-25	28PR
	32PR
17.5-25	16PR
	20PR
16.00-25	20PR
	24PR
16.00-24	20PR
	24PR
15.5-25	20PR



14.00-24	16PR
	20PR
13.00-25	16PR
	20PR
8.25-16	16PR
7.50-16	16PR



← **L-5**

26.5-25	28PR
	32PR
23.5-25	24PR

**R-3** →

23.1-26	12PR
---------	------



**G2-L2**

23.5-25	16PR
	20PR
20.5-25	16PR
	20PR
17.5-25	16PR
	20PR
13.00-24	12PR
	16PR
14.00-24	12PR
	16PR



← **E-4**

18.00-25	32PR
	40PR

**E3E** →

29.5-25	28PR
	32PR
23.5-25	20PR
	24PR
	28PR
20.5-25	20PR
	24PR
17.5-25	16PR
	20PR



**R1**



6.00-12	6PR
6.00-14	6PR
6.00-16	6PR
6.50-16	6PR
7.50-16	6PR
7.50-20	6PR
8.3-20	6PR
8.3-24	6PR
9.5-20	8PR
9.5-24	8PR
10/75-15.3	8PR
11.2-24	8PR
11.2-28	8PR
12.4-24	10PR
12.4-28	10PR
12-38	10PR
13.6-24	10PR
13.6-28	10PR
14.9-24	10PR
14.9-28	10PR
14.9-30	10PR
15.5-38	10PR
15-24	12PR
16.9-24	10PR
16.9-28	10PR
16.9-30	12PR
16.9-34	12PR
18.4-26	12PR
18.4-30	12PR
18.4-34	12PR
18.4-38	12PR
20.8-38	12PR
23.1-26	12PR